

Location:



T1400-PB with No Edge Rail

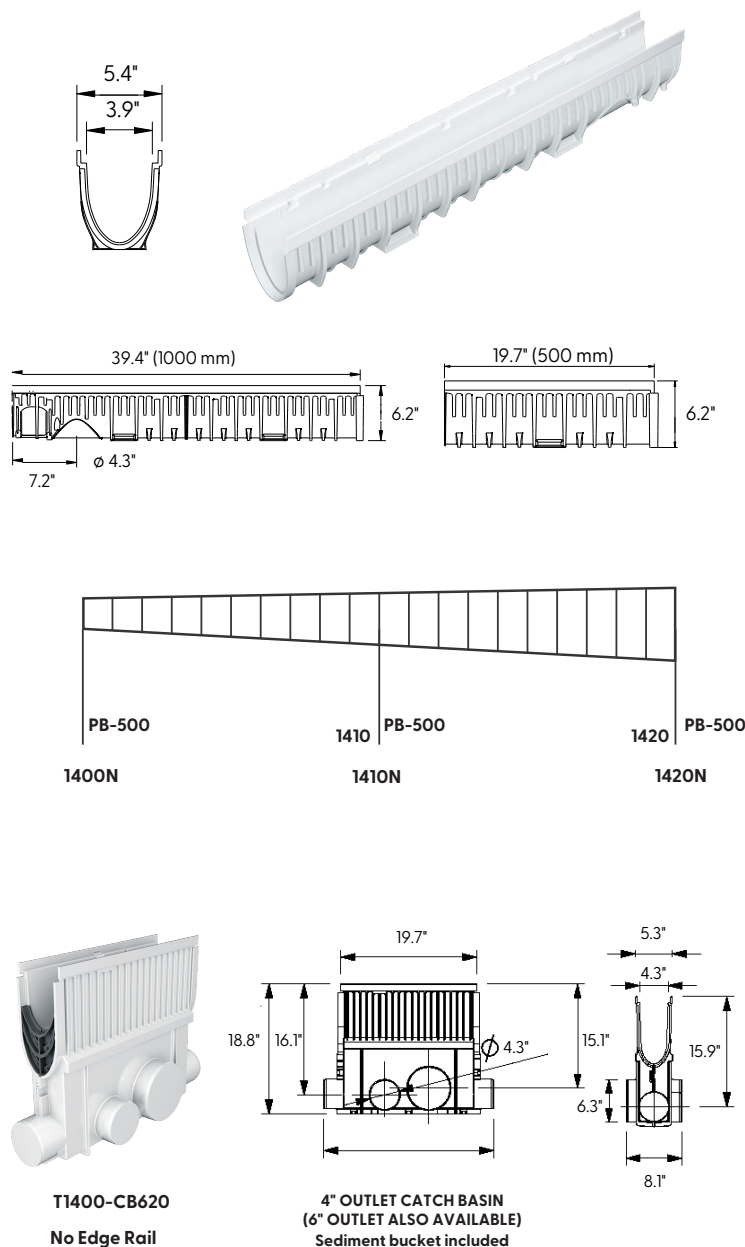


Specification:

MIFAB®'s T1400-PB series channels shall be 39.4" (1000 mm) long with a 4" (100 mm) internal width and radius bottom. Interconnecting channel sections are made of high strength Glass Fiber Reinforced Polyester (GRP) and available in sloping (0.5%) and non-sloping (neutral) channels. Each channel comes with no edge rail. Directional Change Channels available at neutral locations.

Installation devices, plastic end cap/outlet cap, catch basins and bottom outlets are available accessories. Grates (separate Specification Sheets) are available in in Load Class A-C in a variety of materials. Grates utilize the patented "Clipfix" locking mechanism.

CHANNEL MODEL NO.	BODY TYPE	INVERT BODY DEPTH		OVERALL BODY DEPTH		MAXIMUM FLOW GPM	WEIGHT (LESS GRATE) Lbs.
		Sloped - .5% Neutral - 0%	E1 (Min.)	E2 (Max.)	E1 (Min.)	E2 (Max.)	
T1400N-PB	Neutral		5.78"	5.78"	6.23"	6.23"	7.94
T1400N-PB-500	Neutral		5.78"	5.78"	6.23"	6.23"	4.41
T1400N-PB-500-DC	Neutral		5.78"	5.78"	6.23"	6.23"	4.41
T1401-PB	Sloped		5.78"	5.98"	6.23"	6.42"	8.16
T1402-PB	Sloped		5.98"	6.18"	6.42"	6.62"	8.32
T1403-PB	Sloped		6.18"	6.38"	6.62"	6.82"	8.49
T1404-PB	Sloped		6.38"	6.57"	6.82"	7.01"	8.66
T1405-PB	Sloped		6.57"	6.77"	7.01"	7.21"	8.83
T1406-PB	Sloped		6.77"	6.97"	7.21"	7.41"	8.99
T1407-PB	Sloped		6.97"	7.16"	7.41"	7.60"	9.16
T1408-PB	Sloped		7.16"	7.36"	7.60"	7.80"	9.33
T1409-PB	Sloped		7.36"	7.56"	7.80"	8.00"	9.50
T1410-PB	Sloped		7.56"	7.75"	8.00"	8.19"	9.67
T1410N-PB	Neutral		7.75"	7.75"	8.19"	8.19"	9.57
T1410N-PB-500	Neutral		7.75"	7.75"	8.19"	8.19"	4.78
T1410N-PB-500-DC	Neutral		7.75"	7.75"	8.19"	8.19"	4.78
T1411-PB	Sloped		7.75"	7.95"	8.19"	8.39"	9.83
T1412-PB	Sloped		7.95"	8.15"	8.39"	8.59"	10.00
T1413-PB	Sloped		8.15"	8.34"	8.59"	8.78"	10.17
T1414-PB	Sloped		8.34"	8.54"	8.78"	8.98"	10.34
T1415-PB	Sloped		8.54"	8.74"	8.98"	9.18"	10.50
T1416-PB	Sloped		8.74"	8.93"	9.18"	9.38"	10.67
T1417-PB	Sloped		8.93"	9.13"	9.38"	9.57"	10.84
T1418-PB	Sloped		9.13"	9.33"	9.57"	9.77"	11.01
T1419-PB	Sloped		9.33"	9.53"	9.77"	9.97"	11.17
T1420-PB	Sloped		9.53"	9.72"	9.97"	10.16"	11.34
T1420N-PB	Neutral		9.72"	9.72"	10.16"	10.16"	11.42
T1420N-PB-500	Neutral		9.72"	9.72"	10.16"	10.16"	5.71
T1420N-PB-500-DC	Neutral		9.72"	9.72"	10.16"	10.16"	5.71



CLIPFIX ADVANTAGE

The MEA Glass Fiber Reinforced Polyester (GRP) channels have been designed for our universal CLIPFIX grate locking mechanism. The system (channel and grate) provides longitudinal shift protection.

T1400-CB620
No Edge Rail

4" OUTLET CATCH BASIN
(6" OUTLET ALSO AVAILABLE)
Sediment bucket included

Supplied By:
**TRENCH DRAIN
SUPPLY**
877-903-7246
www.trenchdrainsupply.com

Job Name: _____

Page No: _____

Section No: _____

Contractor: _____

Schedule No: _____

Purchase Order No: _____

Revision Date: 2022-02-16

CALIFORNIA PROPOSITION 65 WARNING. This product contains chemicals known to the State of California to cause cancer and birth defects or other reproductive harm.

MIFAB reserves the right to make changes in material and design without formal notice and obligation.

USA: 1-800-465-2736 www.mifab.com CAN: 1-800-387-3880

Location:



T1400-PB-13 with Galvanized Steel Integral Rail

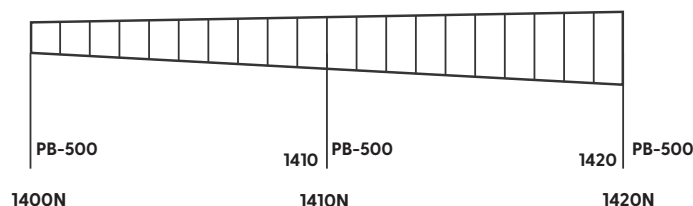
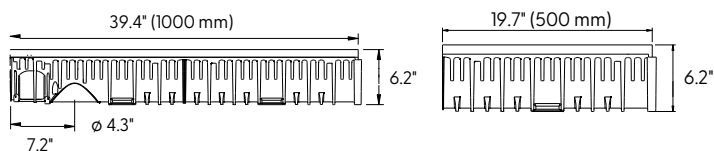
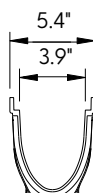


Specification:

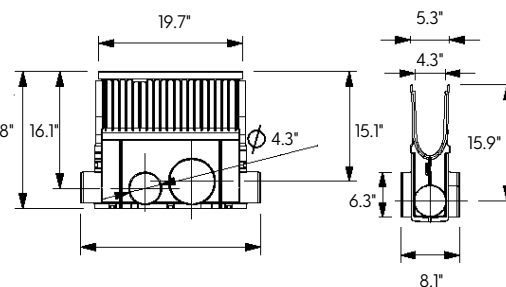
MIFAB®'s T1400-PB-13 series channels shall be 39.4" (1000 mm) long with a 4" (100 mm) internal width and radius bottom. Interconnecting channel sections are made of high strength Glass Fiber Reinforced Polyester (GRP) and available in sloping (0.5%) and non-sloping (neutral) channels. Each channel comes with galvanized edge rail. Directional Change Channels available at neutral locations.

Installation devices, plastic end cap/outlet cap, catch basins and bottom outlets are available accessories. Grates (separate Specification Sheets) are available in in Load Class A-E in a variety of materials. Grates utilize the patented "Clipfix" locking mechanism.

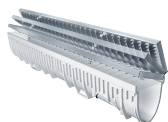
CHANNEL MODEL NO.	BODY TYPE	INVERT BODY DEPTH		OVERALL BODY DEPTH		MAXIMUM FLOW GPM	WEIGHT (LESS GRATE) Lbs.
		Sloped - .5% Neutral - 0%	E1 (Min.)	E2 (Max.)	E1 (Min.)	E2 (Max.)	
T1400N-PB-13	Neutral		5.78"	5.78"	6.23"	6.23"	334.97
T1400N-PB-500-13	Neutral		5.78"	5.78"	6.23"	6.23"	4.41
T1400N-PB-500-DC-13	Neutral		5.78"	5.78"	6.23"	6.23"	4.41
T1401-PB-13	Sloped		5.78"	5.98"	6.23"	6.42"	8.16
T1402-PB-13	Sloped		5.98"	6.18"	6.42"	6.62"	8.32
T1403-PB-13	Sloped		6.18"	6.38"	6.62"	6.82"	8.49
T1404-PB-13	Sloped		6.38"	6.57"	6.82"	7.01"	8.66
T1405-PB-13	Sloped		6.57"	6.77"	7.01"	7.21"	8.83
T1406-PB-13	Sloped		6.77"	6.97"	7.21"	7.41"	8.99
T1407-PB-13	Sloped		6.97"	7.16"	7.41"	7.60"	9.16
T1408-PB-13	Sloped		7.16"	7.36"	7.60"	7.80"	9.33
T1409-PB-13	Sloped		7.36"	7.56"	7.80"	8.00"	9.50
T1410-PB-13	Sloped		7.56"	7.75"	8.00"	8.19"	9.67
T1410N-PB-13	Neutral		7.75"	7.75"	8.19"	8.19"	586.19
T1410N-PB-500-13	Neutral		7.75"	7.75"	8.19"	8.19"	4.78
T1410N-PB-500-DC-13	Neutral		7.75"	7.75"	8.19"	8.19"	4.78
T1411-PB-13	Sloped		7.75"	7.95"	8.19"	8.39"	9.83
T1412-PB-13	Sloped		7.95"	8.15"	8.39"	8.59"	10.00
T1413-PB-13	Sloped		8.15"	8.34"	8.59"	8.78"	10.17
T1414-PB-13	Sloped		8.34"	8.54"	8.78"	8.98"	10.34
T1415-PB-13	Sloped		8.54"	8.74"	8.98"	9.18"	10.50
T1416-PB-13	Sloped		8.74"	8.93"	9.18"	9.38"	10.67
T1417-PB-13	Sloped		8.93"	9.13"	9.38"	9.57"	10.84
T1418-PB-13	Sloped		9.13"	9.33"	9.57"	9.77"	11.01
T1419-PB-13	Sloped		9.33"	9.53"	9.77"	9.97"	11.17
T1420-PB-13	Sloped		9.53"	9.72"	9.97"	10.16"	11.34
T1420N-PB-13	Neutral		9.72"	9.72"	10.16"	10.16"	802.54
T1420N-PB-500-13	Neutral		9.72"	9.72"	10.16"	10.16"	5.71
T1420N-PB-500-DC-13	Neutral		9.72"	9.72"	10.16"	10.16"	5.71



T1400-CB620-13
Galvanized Edge Rail



4" OUTLET CATCH BASIN
(6" OUTLET ALSO AVAILABLE)
Sediment bucket included



CLIPFIX ADVANTAGE

The MEA Glass Fiber Reinforced Polyester (GRP) channels have been designed for our universal CLIPFIX grate locking mechanism. The system (channel and grate) provides longitudinal shift protection.

Supplied By:
**TRENCH DRAIN
SUPPLY**
877-903-7246
www.trenchdrainsupply.com

Job Name: _____

Page No: _____

Section No: _____

Contractor: _____

Schedule No: _____

Purchase Order No: _____

Revision Date: 2022-02-16

CALIFORNIA PROPOSITION 65 WARNING. This product contains chemicals known to the State of California to cause cancer and birth defects or other reproductive harm.

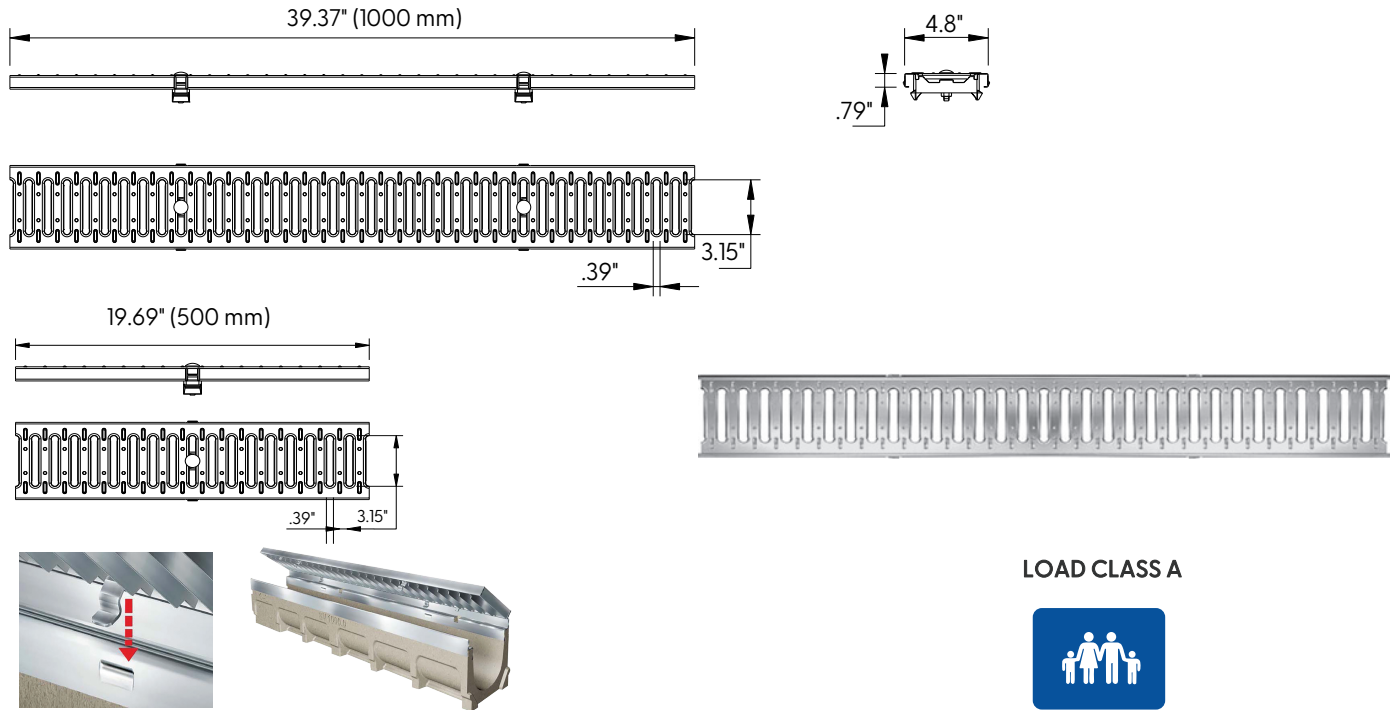
Location:



Galvanized Steel Slotted Grate to suit 4" clear opening channels



Specification: T100-PGA-13-FS galvanized slotted steel grates are independently certified to meet Load Class A tested in accordance with EEN1433 (3,372 lbs. (15kN)). The grate length is 39.37" (1 m). The grates utilize the patented "Clipfix" grate locking mechanism. The system (channel and grate) provides longitudinal shift protection. Optional (.5 m) grates are also available in Load Class A (Part # T100-PGA-13-FS-500).



LOAD CLASS A



A: EN 1433 - 3,372 lbs.,
15kN, 70 PSI

CLIPFIX ADVANTAGE

The MEA polymer concrete and GRP channels are designed for our universal CLIPFIX grate locking mechanism. The system (channel and grate) provides longitudinal shift protection.

Supplied By:
**TRENCHDRAIN
SUPPLY**
877-903-7246
www.trenchdrainsupply.com

GRATE MODEL NUMBER	LENGTH	USED WITH
T100-PGA-13-FS	39.37" (1000 mm)	T1500 Concrete Channel
T100-PGA-13-FS-500	19.69" (500 mm)	T1500 Concrete Channel
TP100-PGA-13-FS	39.37" (1000 mm)	T1400 Plastic Channel or T1330 Aluminum Channel
TP100-PGA-13-FS-500	19.69" (500 mm)	T1400 Plastic Channel or T1330 Aluminum Channel

Job Name: _____

Page No: _____

Section No: _____

Contractor: _____

Schedule No: _____

Purchase Order No: _____

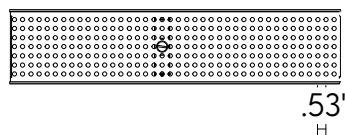
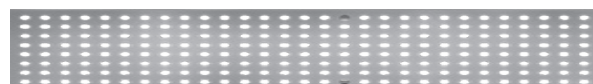
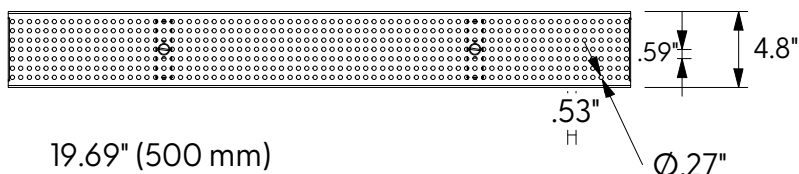
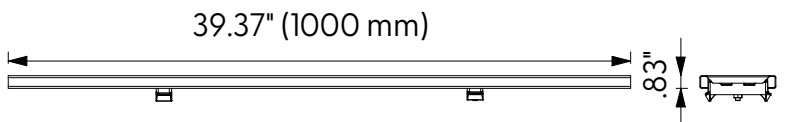
Location:



Galvanized Steel Perforated Grate to suit 4" clear opening channels



Specification: T100-PGA-13-FP galvanized steel perforated grates are independently certified to meet Load Class A tested in accordance with EN 1433 (3,372 lbs (15kN)). The grate length is 39.37" (1 m). The grates utilize the patented "Clipfix" grate locking mechanism. The system (channel and grate) provides longitudinal shift protection. Optional .5 meter grates are also available in Load Class A (Part # TP100-PGA-13-FP-500).



CLIPFIX ADVANTAGE

The MEA polymer concrete and GRP channels are designed for our universal CLIPFIX grate locking mechanism. The system (channel and grate) provides longitudinal shift protection.

LOAD CLASS A



EN 1433 - 3,372 LBS.,
15kN, 70 PSI

Compliance



ADA



HEELPROOF

GRATE MODEL NUMBER	LENGTH	USED WITH
T100-PGA-13-FP	39.37" (1000 mm)	T1500 Concrete Channel
T100-PGA-13-FP-500	19.69" (500 mm)	T1500 Concrete Channel
TP100-PGA-13-FP	39.37" (1000 mm)	T1400 Plastic Channel or T1330 Aluminum Channel
TP100-PGA-13-FP-500	19.69" (500 mm)	T1400 Plastic Channel or T1330 Aluminum Channel

Supplied By:

**TRENCHDRAIN
SUPPLY**

877-903-7246

www.trenchdrainsupply.com

Job Name: _____

Page No: _____

Section No: _____

Contractor: _____

Schedule No: _____

Purchase Order No: _____

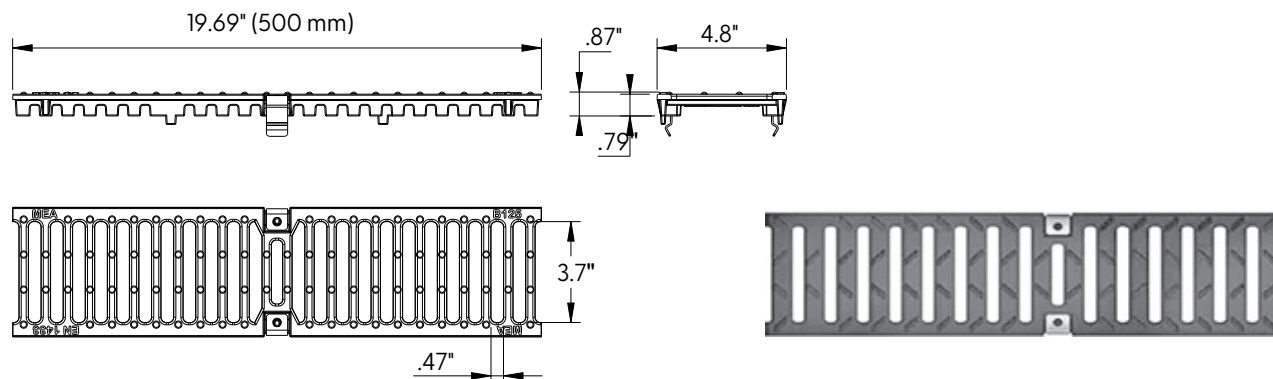
Location:



Ductile Iron Slotted Grate to suit 4" clear opening channels



Specification: T100-PGC-4 ductile iron grates are independently certified to meet Load Class C tested in accordance with EN 1433 56,200 lbs. 250kN. The grate length is 19.69" (.5 m). The grates utilize the patented "Clipfix" grate locking mechanism. The system (channel and grate) provides longitudinal shift protection.



CLIPFIX ADVANTAGE

The MEA polymer concrete and GRP channels are designed for our universal CLIPFIX grate locking mechanism. The system (channel and grate) provides longitudinal shift protection.

LOAD CLASS C



EN 1433 - 56,200 LBS.,
250kN, 1160 PSI

GRATE MODEL NUMBER	LENGTH	USED WITH
T100-PGC-4	19.69" (500 mm)	T1500 Concrete Channel
TP100-PGC-4	19.69" (500 mm)	T1400 Plastic Channel or T1330 Aluminum Channel

Supplied By:

**TRENCHDRAIN
SUPPLY**

877-903-7246

www.trenchdrainsupply.com

Job Name: _____

Page No: _____

Section No: _____

Contractor: _____

Schedule No: _____

Purchase Order No: _____

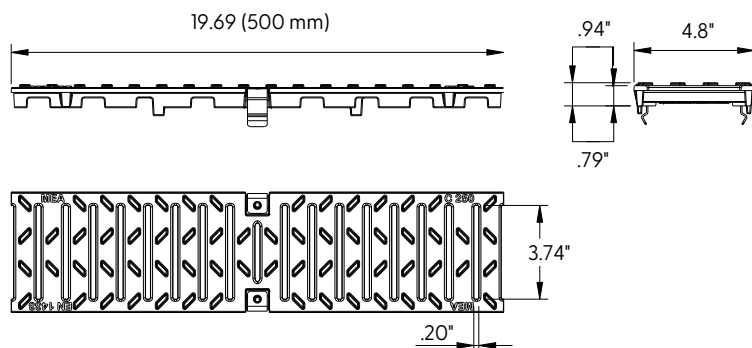
Location:



Ductile Iron Slotted Grate to suit 4" clear opening channels



Specification: T100-PGC-4-HP ductile iron grates are independently certified to meet Load Class C tested in accordance with EN 1433 56,200 lbs. 250kN. The grate length is 19.69" (.5 m). The grates utilize the patented "Clipfix" grate locking mechanism. The system (channel and grate) provides longitudinal shift protection.



CLIPFIX ADVANTAGE

The MEA polymer concrete and GRP channels are designed for our universal CLIPFIX grate locking mechanism. The system (channel and grate) provides longitudinal shift protection.

LOAD CLASS C



EN 1433 - 56,200 LBS.,
250kN, 1160 PSI

Compliance



HEELPROOF

Supplied By:

**TRENCHDRAIN
SUPPLY**
877-903-7246
www.trenchdrainsupply.com

GRATE MODEL NUMBER	LENGTH	USED WITH
T100-PGC-4-HP	19.69" (500 mm)	T1500 Concrete Channel
TP100-PGC-4-HP	19.69" (500 mm)	T1400 Plastic Channel or T1330 Aluminum Channel

Job Name: _____

Page No: _____

Section No: _____

Contractor: _____

Schedule No: _____

Purchase Order No: _____

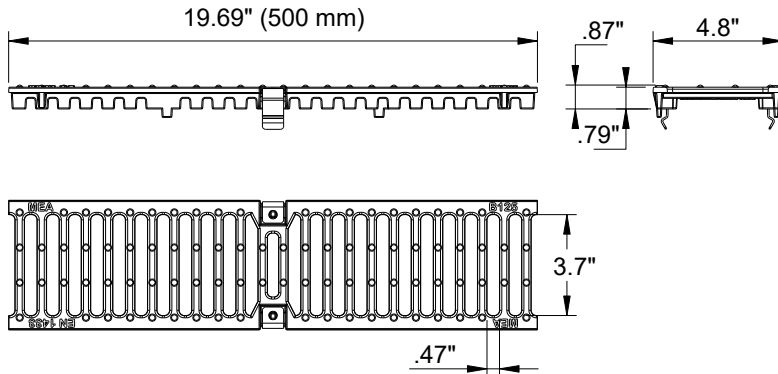
Location: _____



Ductile Iron Slotted Grate to suit 4" clear opening channels



Specification: T100-PGE-4 ductile iron slotted grates are independently certified to meet Load Class E tested in accordance with EN 1433 134,800 lbs. 600kN. The grate length is 19.69" (.50 m). The grates utilize the patented "Clipfix" grate locking mechanism. The system (channel and grate) provides longitudinal shift protection.



CLIPFIX ADVANTAGE

The MEA polymer concrete and GRP channels are designed for our universal CLIPFIX grate locking mechanism. The system (channel and grate) provides longitudinal shift protection.

LOAD CLASS E



EN 1433
134,800 LBS.,
600kN, 2,785 PSI

Supplied By:
**TRENCHDRAIN
SUPPLY**
877-903-7246
www.trenchdrainsupply.com

GRATE MODEL NUMBER	LENGTH
T100-PGE-4	19.69" (500 mm)

Job Name: _____

Page No: _____

Section No: _____

Contractor: _____

Schedule No: _____

Purchase Order No: _____

Revision Date: 2023-02-06

CALIFORNIA PROPOSITION 65 WARNING. This product contains chemicals known to the State of California to cause cancer and birth defects or other reproductive harm.

MIFAB reserves the right to make changes in material and design without formal notice and obligation.

USA: 1-800-465-2736 www.mifab.com CAN: 1-800-387-3880

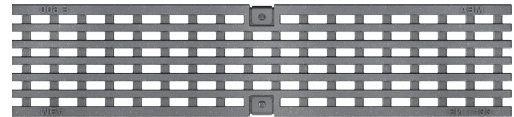
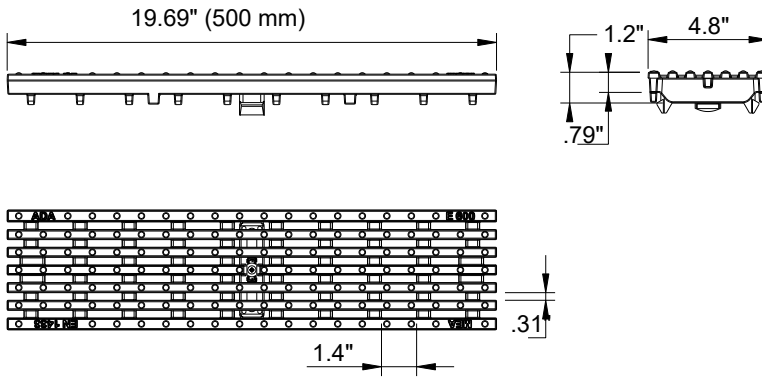
Location: _____



Ductile Iron Longitudinal Slotted Grate to suit 4" clear opening channels



Specification: T100-PGE-4-ADA ductile iron longitudinal slotted grates are independently certified to meet Load Class E tested in accordance with EN 1433 134,800 lbs. 600kN. The grate length is 19.69" (.50 m). The grates utilize the patented "Clipfix" grate locking mechanism. The system (channel and grate) provides longitudinal shift protection.



CLIPFIX ADVANTAGE

The MEA polymer concrete and GRP channels are designed for our universal CLIPFIX grate locking mechanism. The system (channel and grate) provides longitudinal shift protection.

LOAD CLASS E



EN 1433
134,800 LBS.,
600kN, 2,785 PSI

Compliance



ADA



HEELPROOF

Supplied By:
**TRENCHDRAIN
SUPPLY**
877-903-7246
www.trenchdrainsupply.com

GRATE MODEL NUMBER	LENGTH
T100-PGE-4-ADA	19.69" (500 mm)

Job Name: _____

Page No: _____

Section No: _____

Contractor: _____

Schedule No: _____

Purchase Order No: _____

Revision Date: 2023-02-06

CALIFORNIA PROPOSITION 65 WARNING. This product contains chemicals known to the State of California to cause cancer and birth defects or other reproductive harm.

MIFAB reserves the right to make changes in material and design without formal notice and obligation.

USA: 1-800-465-2736 www.mifab.com CAN: 1-800-387-3880

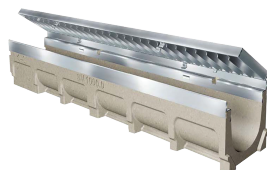
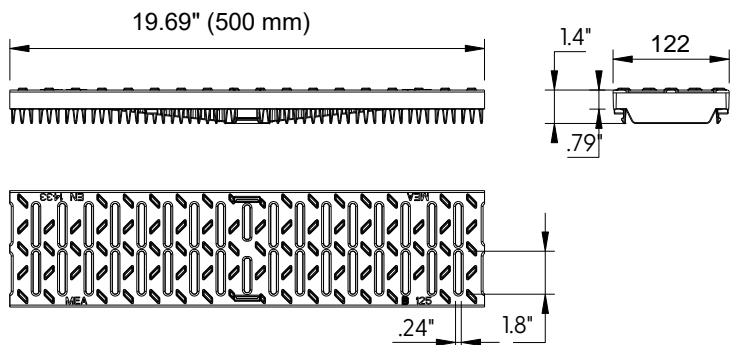
Location:



Plastic Slotted Grate to suit 4" clear opening channels



Specification: T100-PGC-HPP plastic grates are independently certified to meet Load Class C tested in accordance with EN 1433 56,200 lbs. 250kN. The grate length is 19.69" (.5 m). The grates utilize the patented "Clipfix" grate locking mechanism. The system (channel and grate) provides longitudinal shift protection.



CLIPFIX ADVANTAGE

The MEA polymer concrete and GRP channels are designed for our universal CLIPFIX grate locking mechanism. The system (channel and grate) provides longitudinal shift protection.

LOAD CLASS C



EN 1433 - 56,200 LBS.,
250kN, 1160 PSI

Compliance



HEELPROOF

Supplied By:
**TRENCHDRAIN
SUPPLY**
877-903-7246
www.trenchdrainsupply.com

GRATE MODEL NUMBER	LENGTH	USED WITH
T100-PGC-3-FP-500	19.69" (500 mm)	T1500 Concrete Channel
T100-PGC-3-FP-500	19.69" (500 mm)	T1400 Plastic Channel or T1330 Aluminum Channel

Job Name: _____

Page No: _____

Section No: _____

Contractor: _____

Schedule No: _____

Purchase Order No: _____

CALIFORNIA PROPOSITION 65 WARNING. This product contains chemicals known to the State of California to cause cancer and birth defects or other reproductive harm.